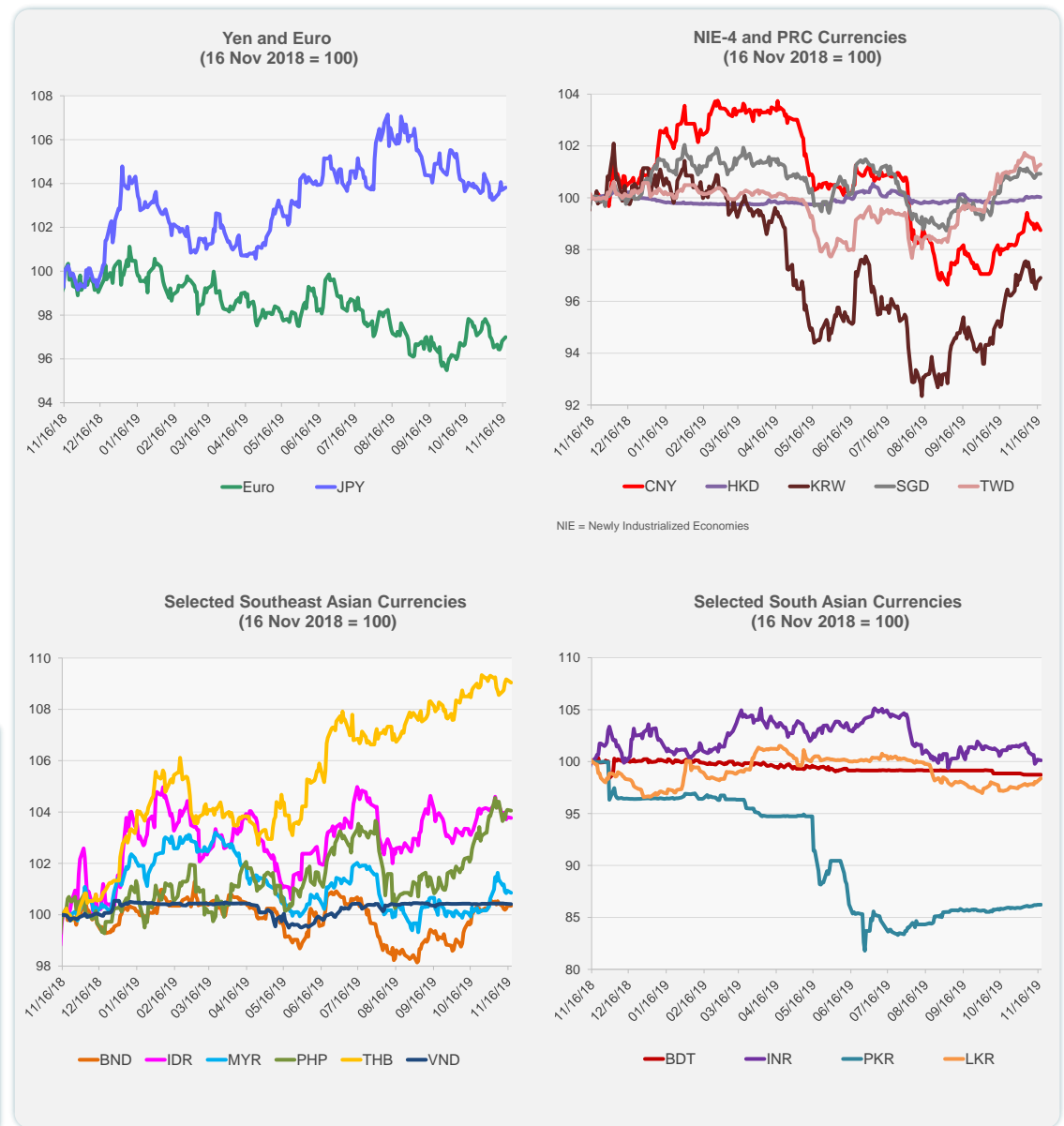
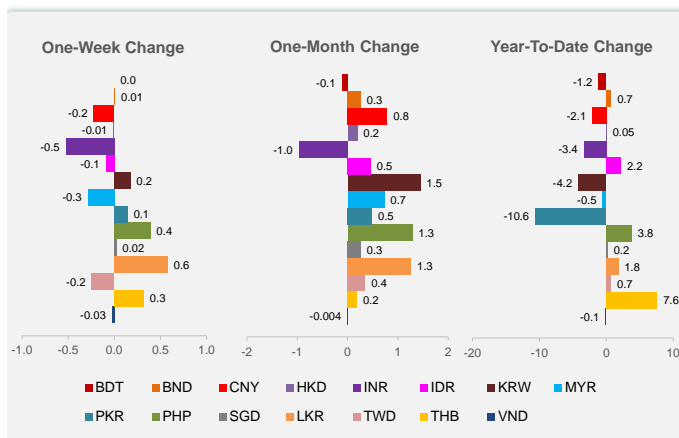


	Latest Closing	% change from Previous Day	% change from 01-Jan-19
Euro	0.90	0.19	-3.43
Japanese yen (JPY)	108.68	0.11	0.98
Bangladeshi taka (BDT)	84.88	0.00	-1.18
Brunei dollar (BND)	1.36	-0.01	0.73
Chinese yuan (CNY)	7.03	-0.26	-2.10
Hong Kong dollar (HKD)	7.83	-0.02	0.05
Indian rupee (INR)	71.85	-0.08	-3.36
Indonesian rupiah (IDR)	14,081.00	-0.03	2.19
Korean won (KRW)	1,164.55	0.19	-4.18
Malaysian ringgit (MYR)	4.16	-0.08	-0.54
Pakistan rupee (PKR)	155.36	0.01	-10.61
Philippine peso (PHP)	50.66	-0.03	3.79
Singapore dollar (SGD)	1.36	0.00	0.20
Sri Lanka rupee (LKR)	179.63	0.32	1.79
Taipei,China NT dollar (TWD)	30.50	0.10	0.71
Thai baht (THB)	30.25	-0.09	7.61
Vietnamese dong (VND)	23,205.00	-0.01	-0.13

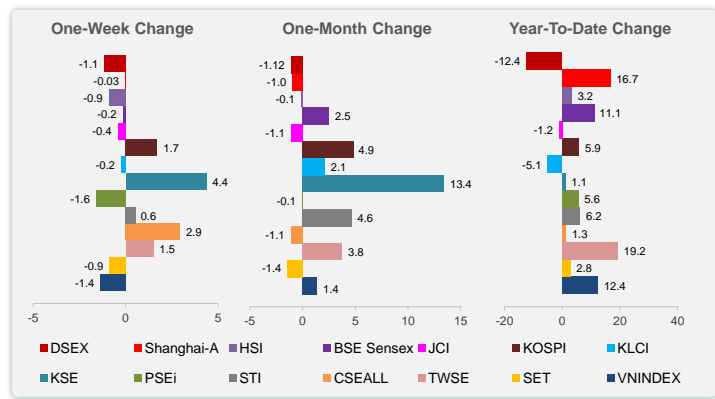
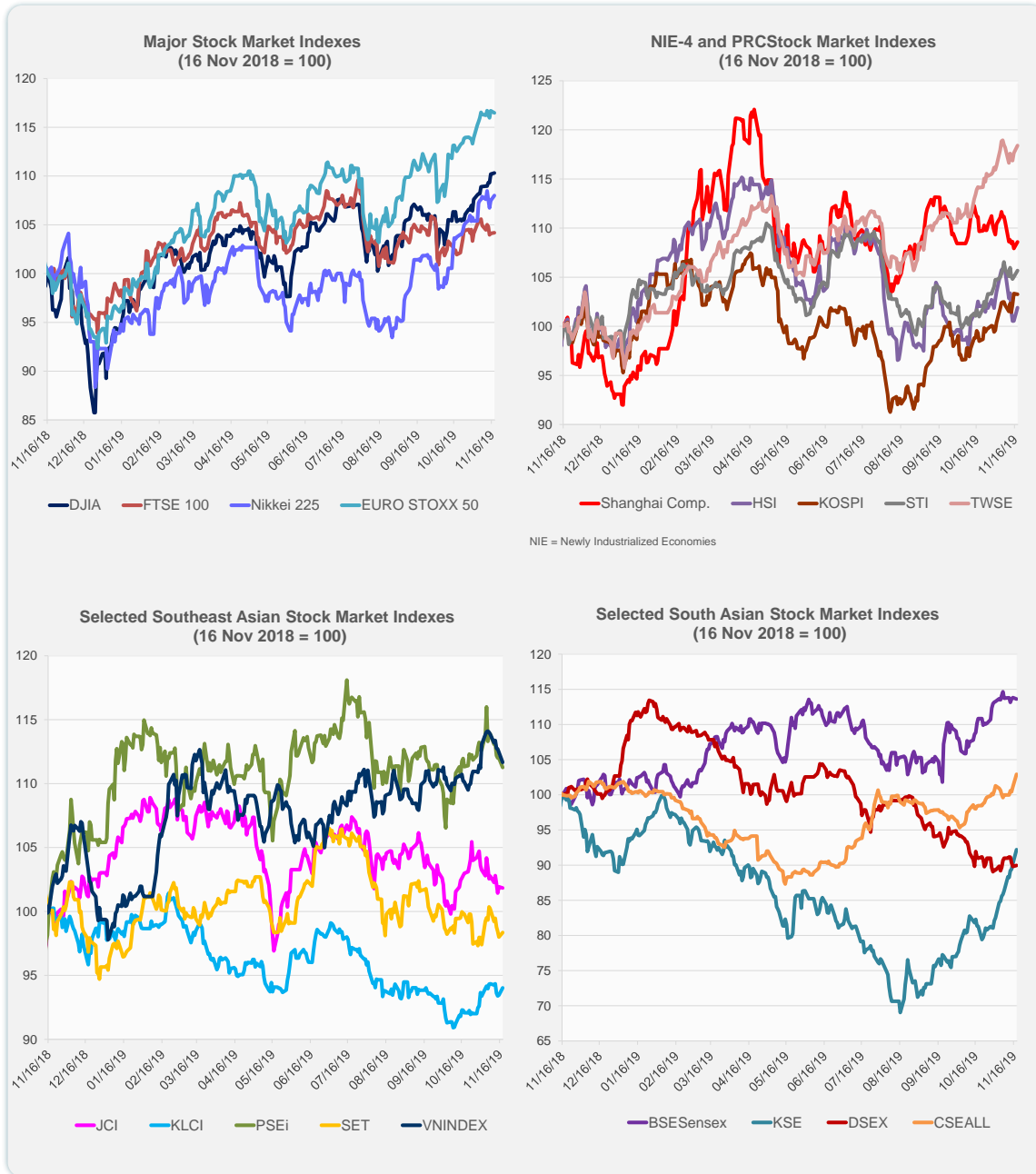


Note: Negative/Decreasing values indicate depreciation of local currency, and positive/increasing values indicate appreciation.  
Source: Bloomberg.

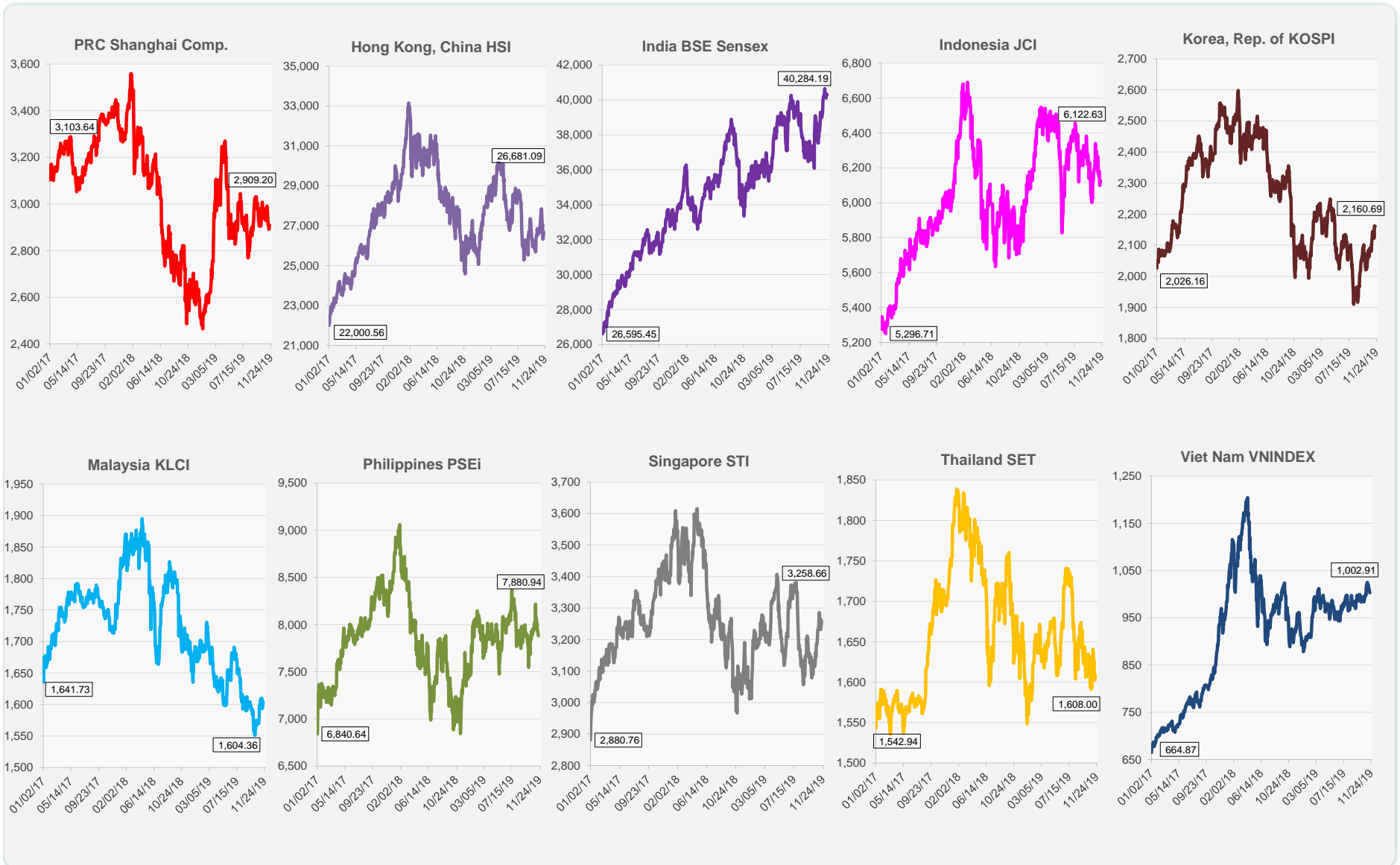


Source: Bloomberg.

	Latest Closing	% change from Previous Day	% change from 01-Jan-19
US Dow Jones Ind Avg	28,036.22	0.11	20.19
US NASDAQ	8,549.94	0.11	28.86
US S&P 500	3,122.03	0.05	24.54
UK FTSE 100	7,307.70	0.07	8.61
EURO STOXX 50	3,704.92	-0.18	23.44
Japan NIKKEI 225	23,416.76	0.49	17.00
Bangladesh DSEX	4,717.39	0.15	-12.41
PRC Shanghai Comp.	2,909.20	0.62	16.65
Hong Kong, China HSI	26,681.09	1.35	3.23
India BSE Sensex	40,284.19	-0.18	11.11
Indonesia JCI	6,122.63	-0.09	-1.16
Korea, Rep. of KOSPI	2,160.69	-0.07	5.86
Malaysia KLCI	1,604.36	0.60	-5.10
Pakistan KSE 100	38,411.56	2.20	1.09
Philippines PSEi	7,880.94	-0.66	5.56
Singapore STI	3,258.66	0.61	6.19
Sri Lanka CSEALL	6,129.56	1.77	1.28
Taipei, China TWSE	11,599.78	0.64	19.25
Thailand SET	1,608.00	0.36	2.82
Viet Nam VNINDEX	1,002.91	-0.70	12.37



Source: Bloomberg.

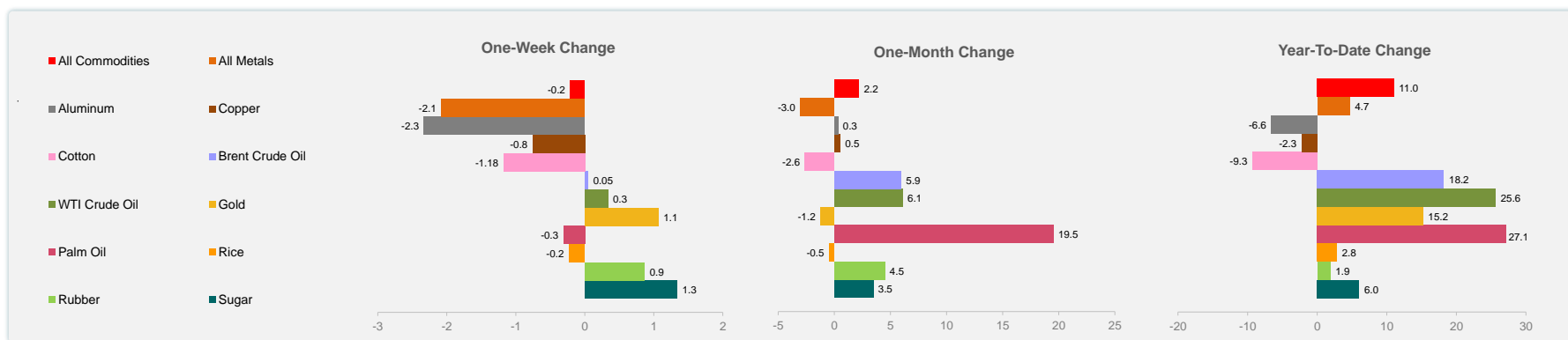
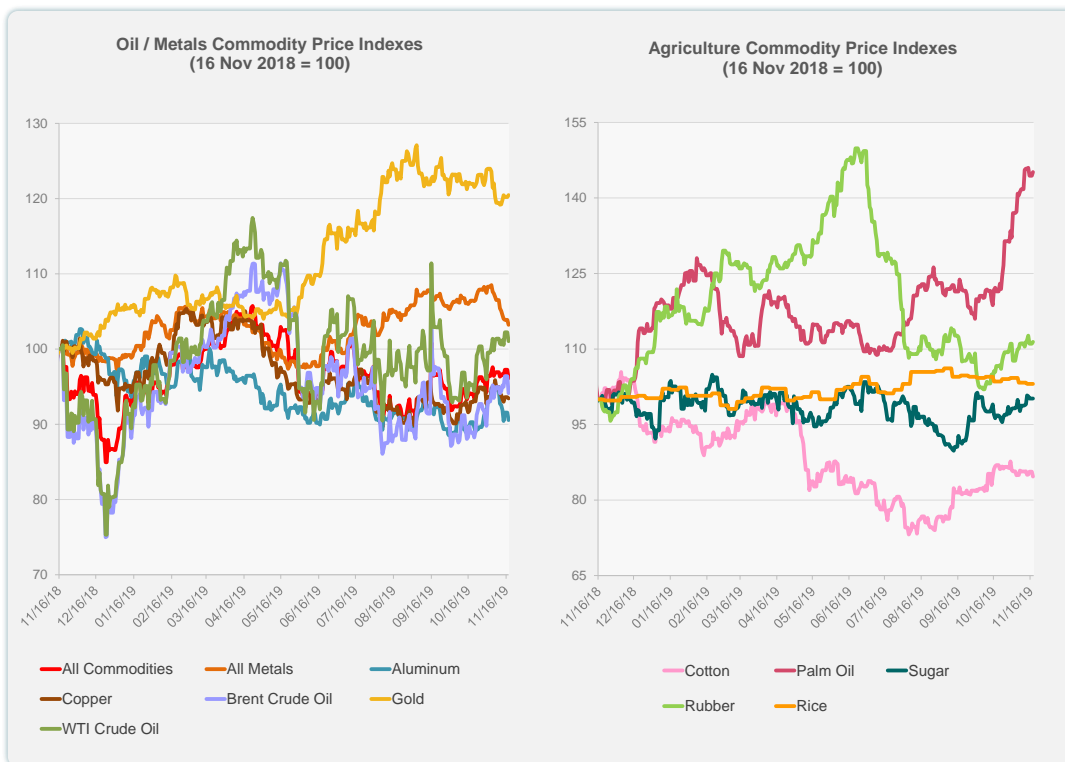


Source: Bloomberg.

	Unit	Latest Closing	% change from Previous Day	% change from 01-Jan-19
S&P All Commodities	US\$	415.65	-1.15	11.04
S&P All Metals	US\$	213.78	-0.63	4.67
Aluminum	US\$/metric ton	1,740.00	-1.08	-6.59
Copper	US\$/metric ton	5,815.00	-0.18	-2.25
Cotton	US cents/lb	62.97	-1.13	-9.33
Brent Crude Oil	US\$/barrel	62.44	-2.33	18.21
WTI Crude Oil	US\$/barrel	57.05	-1.16	25.63
Gold	US\$/troy oz	1,471.45	0.21	15.22
Palm Oil	US\$/metric tonne	600.58	0.50	27.14
Rice <sup>1</sup>	US\$/metric ton	436.00	0.00	2.83
Rubber <sup>2</sup>	US\$/kg	151.30	0.33	1.89
Sugar	US cents/lb	12.85	0.00	6.02

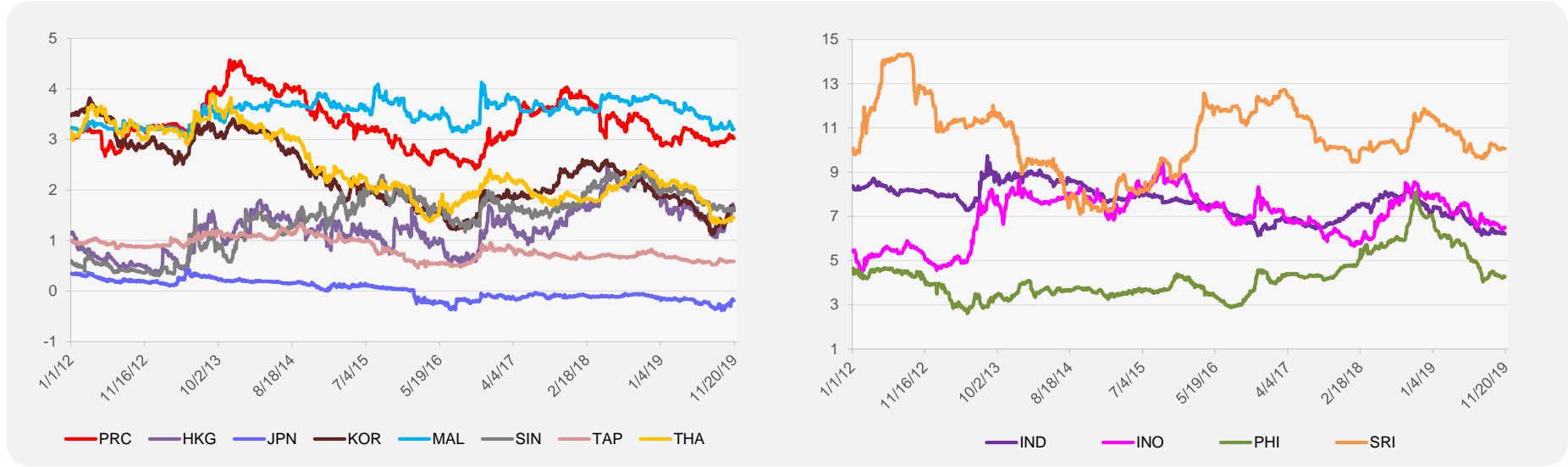
<sup>1</sup> Latest closing price from 13 November 2019.

<sup>2</sup> Singapore Exchange, Ribbed Smoked Sheet Rubber.

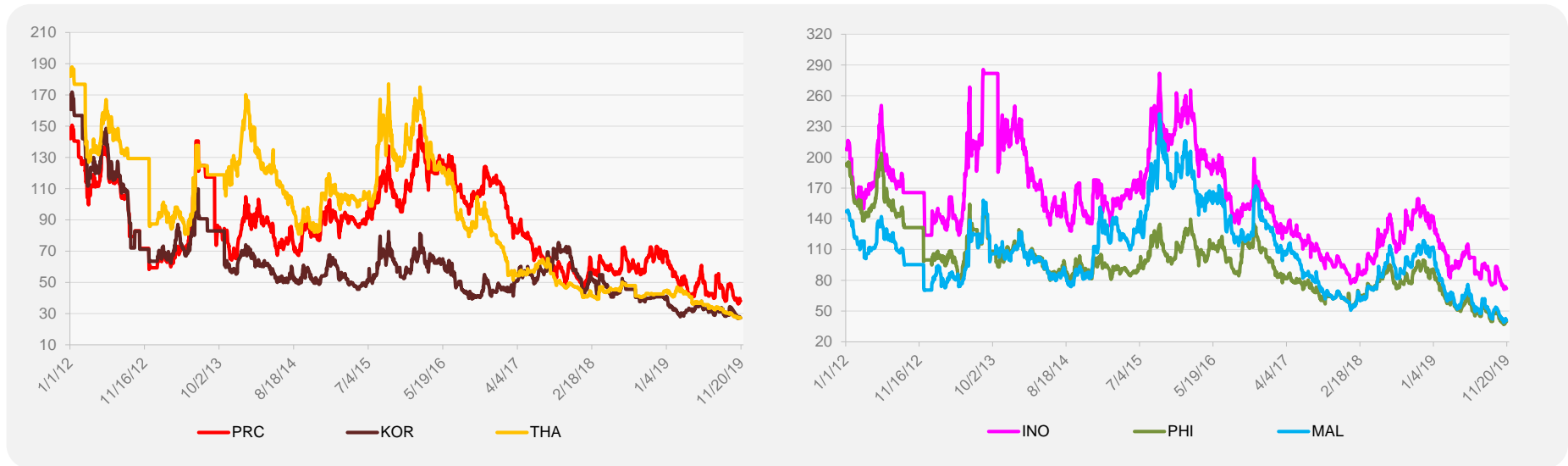


Source: Bloomberg.

### 5-YEAR LOCAL CURRENCY GOVERNMENT BOND YIELDS (%)



### 5-YEAR CREDIT DEFAULT SWAP<sup>1</sup>



<sup>1</sup> In USD and based on sovereign bonds.  
Source: Bloomberg.